

The image shows a piece of aged, yellowish parchment with a constellation diagram overlaid. The diagram consists of numerous small dots connected by thin lines, forming a complex pattern of stars and lines. The parchment has a mottled appearance with some darker staining, particularly along the left edge. The text 'Chapter 10' is printed in a large, black, sans-serif font across the lower portion of the parchment. The number '10' is significantly larger and bolder than the word 'Chapter'.

Chapter **10**

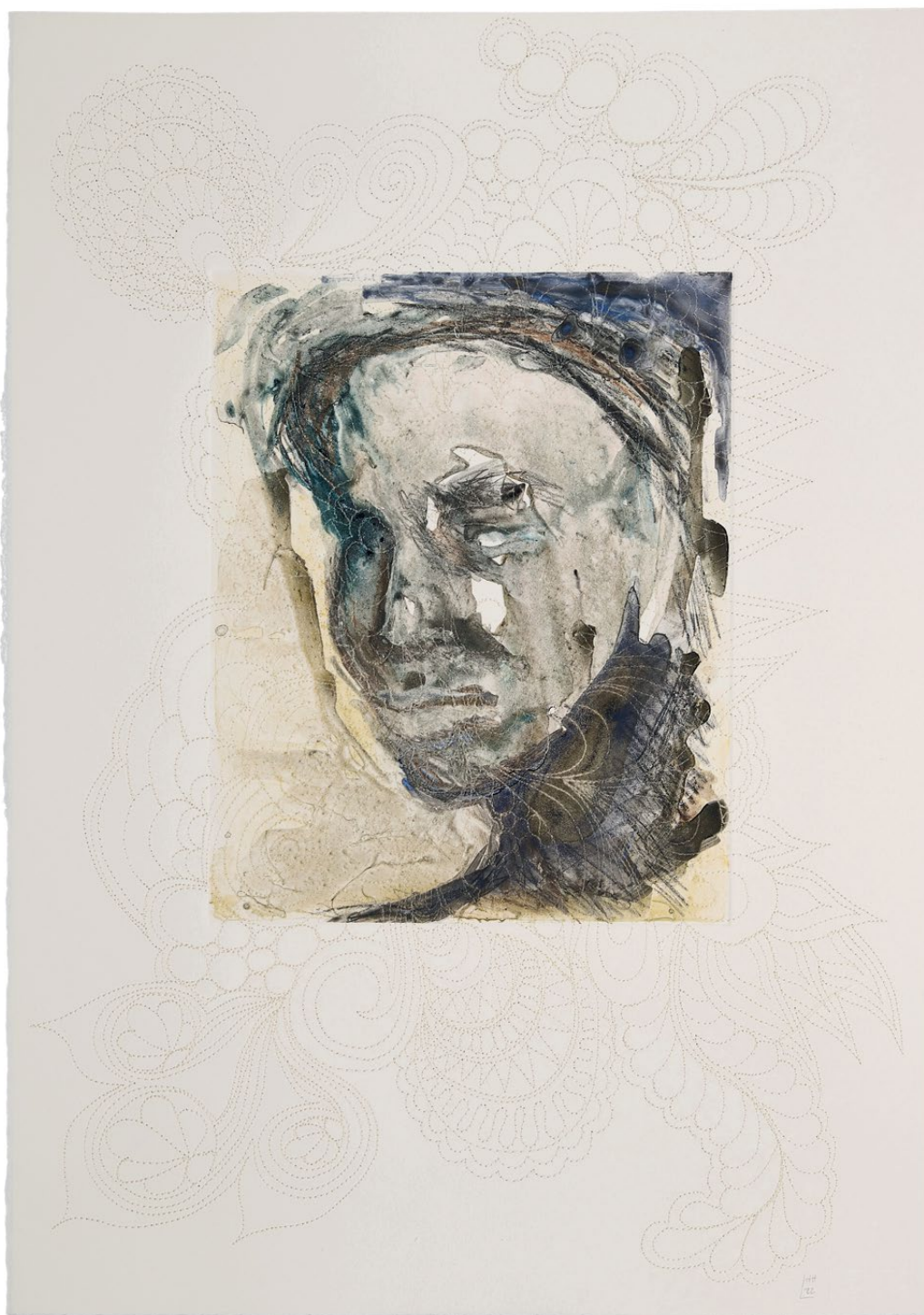


Inherited Obsessions: A Visual Essay

Laura de Harde



































dh
22



q#
22











dH
22









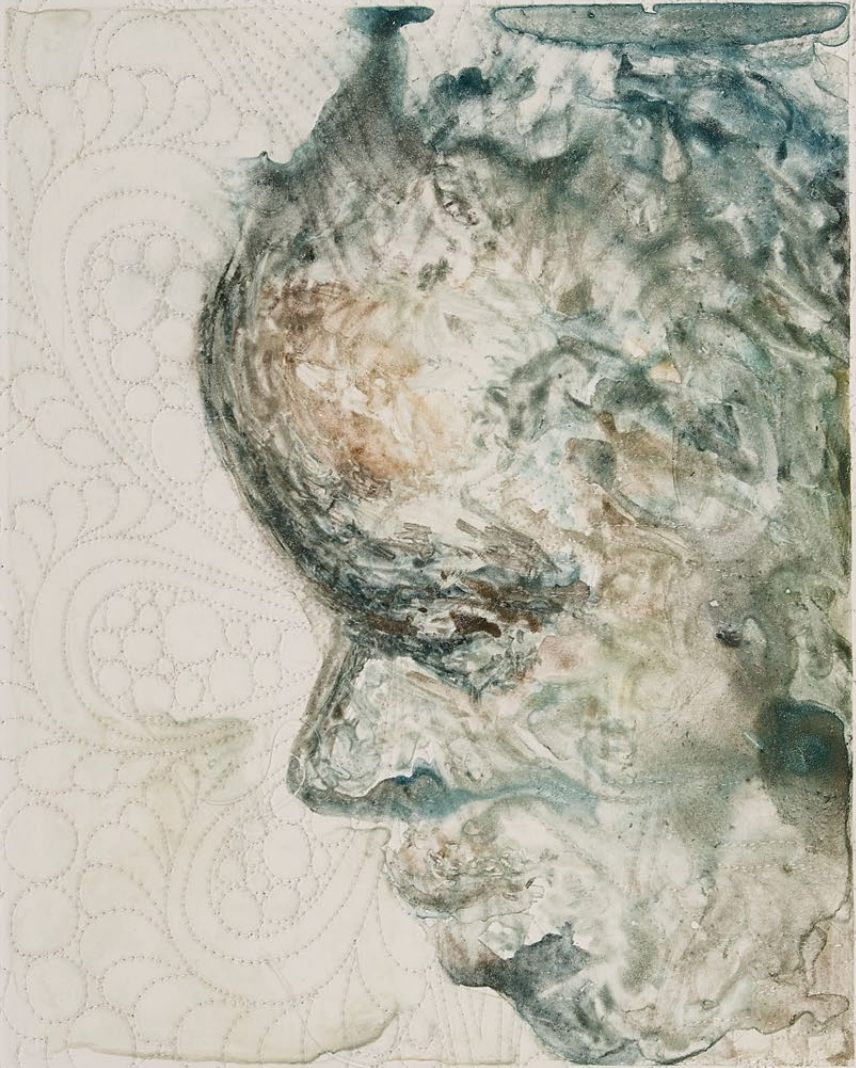


























List of Artworks

- 102** *Sešego 1* (detail), watercolour monotype, 35 x 33cm, 2022.
- 103** *Sešego 1*, watercolour monotype, 35 x 33cm, 2022.
- 103** *Sešego 2*, watercolour monotype, 35 x 33cm, 2022.
- 103** *Sešego 3*, watercolour monotype, 35 x 33cm, 2022.
- 104** *No. 2358*, watercolour monotype on stitched Fabriano paper, 50 x 35cm, 2022.
- 105** *No. 2358* (detail), watercolour monotype on stitched Fabriano paper, 50 x 35cm, 2022.
- 106** *Noord-Sotho*, watercolour monotype on stitched Fabriano paper, 50 x 35cm, 2022.
- 106** *Vrou Noord-Sotho 1*, watercolour monotype on stitched Fabriano paper, 50 x 35cm, 2022.
- 107** *Vrou Noord-Sotho 2*, watercolour monotype on stitched Fabriano paper, 35 x 33cm, 2022.
- 108** *Ngwato 1*, watercolour monotype on stitched Fabriano paper, 50 x 35cm, 2022.
- 109** *Ngwato 1* (detail), watercolour monotype on stitched Fabriano paper, 50 x 35cm, 2022.
- 110** *Ngwato 3*, watercolour monotype on stitched Fabriano paper, 50 x 35cm, 2022.
- 110** *Gananwa 1*, watercolour monotype on stitched Fabriano paper, 35 x 33cm, 2022.
- 111** *Gananwa 2*, watercolour monotype on stitched Fabriano paper, 35 x 33cm, 2022.
- 111** *Gananwa 3*, watercolour monotype on stitched Fabriano paper, 50 x 35cm, 2022.
- 112** *ET 1978/*, watercolour monotype on stitched Fabriano paper, 50 x 35cm, 2022.
- 112** *ET 1978/* (detail), watercolour monotype on stitched Fabriano paper, 50 x 35cm, 2022.
- 113** *In front*, watercolour monotype on stitched Fabriano paper, 35 x 33cm, 2022.
- 114** *Foto Uitgereik 1*, monoprint with embedded embroidery, 35 x 33cm, 2022.
- 114** *Suidwes-Afrika*, monoprint with embedded embroidery, 35 x 33cm, 2022.
- 115** *South-West Woman 1*, monoprint with embedded embroidery, 35 x 33cm, 2022.
- 116** *Issued by Woman 1*, monoprint with embedded embroidery, 35 x 33cm, 2022.
- 117** *Ngwato 2*, watercolour monotype on stitched Fabriano paper, 35 x 33cm, 2022.
- 118** *Ovambo Woman 2*, watercolour and embroidery, 35 x 33cm, 2022.
- 119** *Ovambo Woman 3*, watercolour and embroidery, 35 x 33cm, 2022.
- 120** *Sešego 1978/47* (detail), watercolour monotype on stitched Fabriano paper, 50 x 35cm, 2022.
- 121** *Sešego 1978/47*, watercolour monotype on stitched Fabriano paper, 50 x 35cm, 2022.
- 122** *Issued by State*, watercolour monotype on stitched Fabriano paper, 35 x 33cm, 2022.
- 123** *Front*, watercolour monotype on stitched Fabriano paper, 50 x 35cm, 2022.
- 123** *Their grain 3*, watercolour monotype on stitched Fabriano paper, 50 x 35cm, 2022.
- 124** *Ovambo Woman*, watercolour and embroidery, 35 x 33cm, 2022.
- 125** *Issued Woman 3*, monoprint with embedded embroidery, 35 x 33cm, 2022.
- 125** *Issued Woman 4*, monoprint with embedded embroidery, 35 x 33cm, 2022.
- 126** *Women in front of their grain stores 2* (detail), monoprint with embedded embroidery, 100 x 70cm, 2022.
- 127** *Women in front of their grain stores 2*, monoprint with embedded embroidery, 100 x 70cm, 2022.
- 128** *Foto Uitgereik 2*, monoprint with embedded embroidery, 35 x 33cm, 2022.
- 129** *Foto Uitgereik 3*, monoprint with embedded embroidery, 35 x 33cm, 2022.
- 130** *Vroue voor*, monoprint with embedded embroidery, 35 x 33cm, 2022.
- 131** *Vroue voor* (detail), monoprint with embedded embroidery, 35 x 33cm, 2022.
- 132** *Their grain II*, watercolour monotype on stitched Fabriano paper, 50 x 35cm, 2022.
- 133** *Their grain I*, watercolour monotype on stitched Fabriano paper, 50 x 35cm, 2022.
- 134** *State*, watercolour monotype on stitched Fabriano paper, 50 x 35cm, 2022.
- 135** *State* (detail), watercolour monotype on stitched Fabriano paper, 50 x 35cm, 2022.
- 136** *Graanstore* (detail), monoprint with embedded embroidery, 35 x 33cm, 2022.
- 137** *Graanstore*, monoprint with embedded embroidery, 35 x 33cm, 2022.
- 138** *Women in front of their grain stores 1*, monoprint with embedded embroidery, 100 x 70cm, 2022.
- 139** *Women in front of their grain stores 1* (detail), monoprint with embedded embroidery, 100 x 70cm, 2022.
- 140** *Ovambo Vrou* (detail), watercolour and embroidery, 93 x 65cm, 2022.
- 141** *Ovambo Vrou*, watercolour and embroidery, 93 x 65cm, 2022.

Artworks stitched by Tilly de Harde

Tilly de Harde is a Master Quilter, Fibre Artist and teacher. Her creative practice is driven by an interest in fabrics, fibres and techniques. Tilly's artworks develop from a strong foundation in quilting. In order to find different ways of creating texture from fibres, Tilly does a lot of research. She experiments with innovative techniques and teaches the results to her students. Since 2000, Tilly has won numerous awards both nationally and internationally, most recently she won Best on Show at the National Quilt Festival in 2019. Tilly has been recognised as a Master Quilter since 2008 and in June 2020 she was inducted into the South African Quilters' Guild Hall of Fame.

Artworks printed with Bevan de Wet

Bevan de Wet is an award-winning artist and printmaker based in Johannesburg. He graduated with a BFA with distinction from Rhodes University in 2008. From 2011–2016, Bevan worked at the Artist Proof Studio in Johannesburg as a professional print technician, collaborator, and academic facilitator. In 2016, he founded his own print studio, *Eleven Editions*, where he also collaborates with other artists and publishes various projects. Bevan regularly works with Phumani Archive Mill, a paper-making research unit at the University of Johannesburg, where he produces his handmade paperwork. Bevan works primarily with paper: with a focus on etching, relief printing, papermaking, drawing and installation.

Artworks photographed by Neil Kirby

Neil Kirby is a commercial photographer and industrial designer based in Johannesburg, South Africa. He completed his education at Technikon Natal in 1997. In 2007, he was awarded the coveted PICA photographer of the year for an editorial in *DeKat* magazine, involving leading artists, poets and actors. Neil is actively involved in art reproduction and his clients include William Kentridge, Rina Stutzer, Elizabeth Castle and the Wits Origins Centre. When he is not behind his camera, he can be found pursuing his quest to create the perfect pizza.

Publication designed by Charl Malherbe

Charl Malherbe is a graphic designer from Johannesburg. He started his career in 1998 and spent the first four years as an editorial designer in the commercial magazine industry. He then went on to work as a graphic designer at a design agency in Bath in the United Kingdom. After returning to South Africa, he became the art director for the award-winning *DeKat* Magazine. He left to become the co-founder of a successful design company, specialising in magazine design, where he art directed magazines such as *Destiny Man*, as well as brand design, illustration and all other below-the-line marketing material. He now runs his own design studio, *Design Garage*, as a brand custodian and creative director for academic institutions. When he is not in front of his laptop, he can be found in his workshop, covered in sawdust, building high-end boutique guitars.

